



GARDEN &
EXTERIOR

MATERIALS &
INNOVATION

Corporate Office:
TAKASHO GARDEN LIVING INDIA PVT. LTD.
E-17, Siddhi Vinayak Business Towers,
Makarba, Ahmedabad 380051.
Gujarat, India.





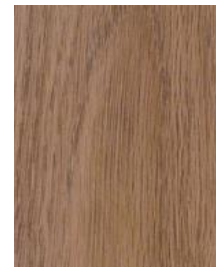
- Japanese designed & made aluminium profiles & panels
- Proven performance- 25+ yrs
- Pre-finished metal sheet w/ surface finish 1 mm
- Tested 1530.3 Spread-of-Flame Index is 0 & 3837 is Group 1.
- Tested for UV damage
 - ✓ Sun shine weatherometer (Japan) QUV, Xenon ARC (India) and Xenon ARC (Australia)
- 5-year warranty
- Batten cladding
 - ✓ Wall thicknesses: 1-2.5mm profile dependent
 - ✓ Up to 6100mm long
- Panel cladding- Aluminium
 - ✓ Panel thicknesses range: 0.8-2mm
 - ✓ 2000x1000mm



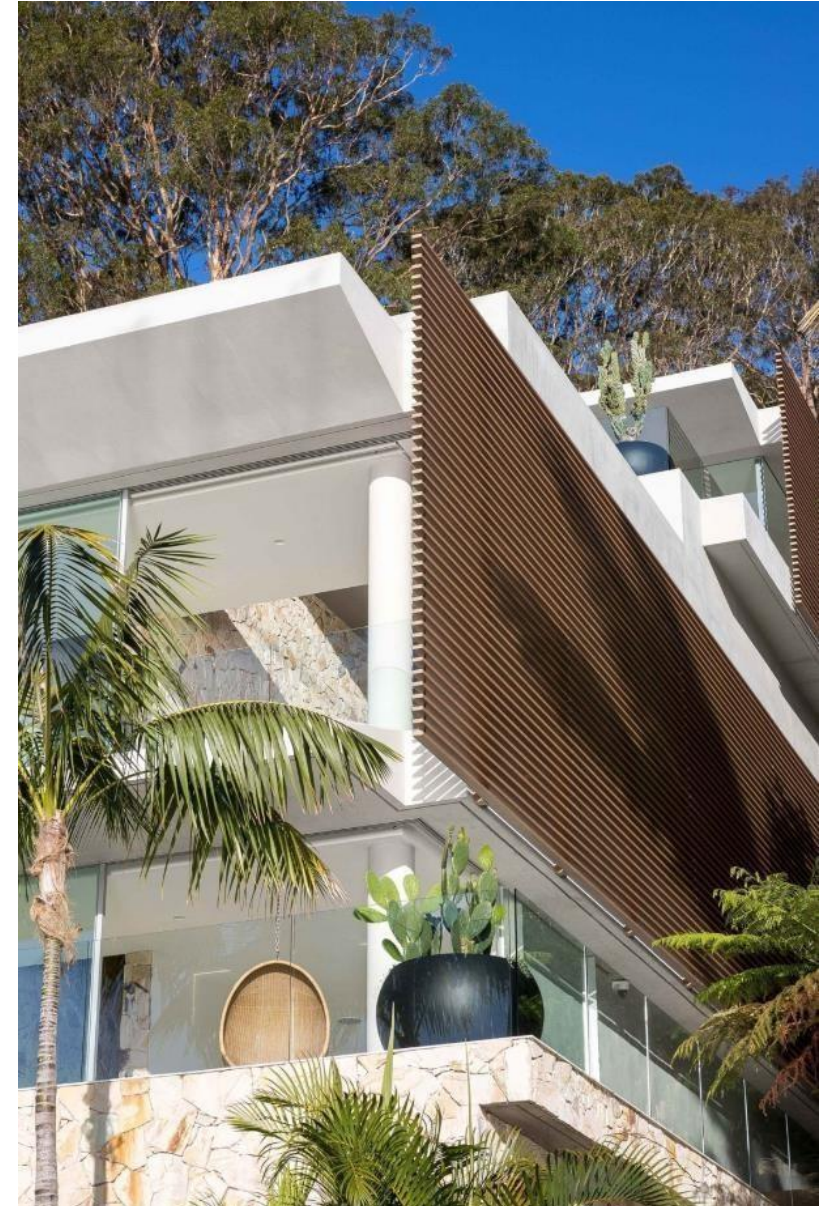
- Extruded prefinished aluminium profiles with exterior grade polymer
- Fine detailed surface appearance
- Different textures & surface styles
- Easy to install



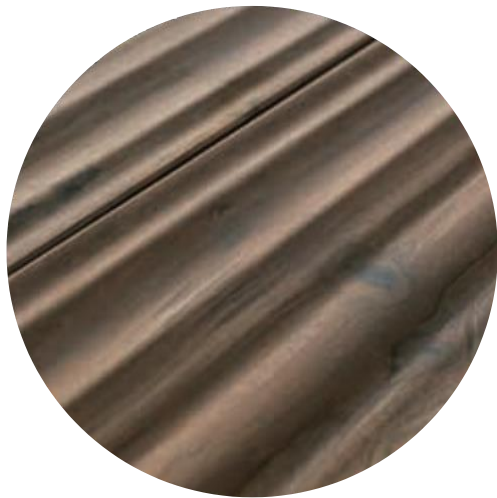
Natural Matte Appearance



Textured finish



Beautiful natural textures recreated with the finest details and workmanship.



Expression

Beautiful wood grain and three-dimensional texture.



Processing

Sheets overlap in a single place, giving a seamless finish.



Durability

We take pride in our 20 years of strength and quality.



Colour

We offer a rich variety of 62 colors. You're sure to find the perfect shade for your space.

80+
colors

color variations

									
Charcoal Gray	Dark Pine	Walnut	Black Ebony	Brown Ebony	Rusty Granite	Red Granite	White Granite	Rusty Green	Travertine
									
Red Wood	Natural Pine	Light Oak	Natural Wood	Ivory Wood	Dark Vibrato*	Shine Stainless*	Rusty Dark*	Rusty Copper*	Gritter Silver*
									
Jarrah	Acty Oak	Spring Oak	White Pine	Dark Zebra	Stainless Steel	Kyoto Kuro cha*	Kyoto Kaki cha*	Kyoto Kara iro*	Kyoto Kare iro*
									
Brown Classic*	Green Classic*	Natural Classic*	White Classic*	Light Zebra	Black Carbon	Grilled Wood	Brown Bamboo	Yellow Bamboo	Naguri
									
Blue Pine	Green Pine	Blue Birch	Orange Birch	Yellow Birch	Green Bamboo	Old Bamboo	Sesame Bamboo	Chestnut	Japanese Cypress
									
Black Marble	Earth Blue	Sepia Marble	White Marble	Slate	Yellow Ryusen	White Ryusen	Yellow Sand	White Sand	Yellow Juraku

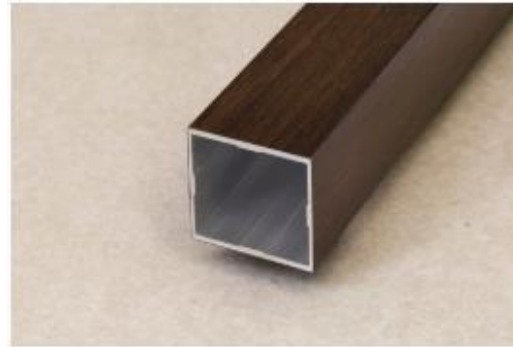


ever art wood®

The Koshi batten is a standard hollow section that replicates a plain timber batten with no special fixtures or fittings.

Available in square and rectangular size.

Can be mounted using special ground attachments.



Koshi Batten - Square

Standard Hollow Section

Square profile

20 x 20mm	85 x 85mm
40 x 40mm	100 x 100mm
60 x 60mm	120 x 120mm
75 x 75mm	



Koshi Batten - Rectangle

Standard Hollow Section

Rectangle profile

20 x 40mm	50 x 100mm
30 x 50mm	50 x 150mm
30 x 60mm	85 x 170mm
30 x 85mm	

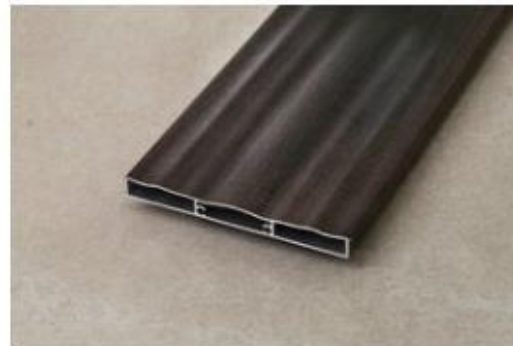


Koshi Plank - Plain

Standard Hollow Section

Plain plank profile

w/ square edge	w/ round edge
8 x 75mm	13 x 120mm
15 x 85mm	
12 x 100mm	



Koshi Plank - Nami

Standard Hollow Section

Waved plank profile

w/ square edge	w/ round edge
10 x 100mm	20 x 180mm
10 x 150mm	



Koshi Round

Standard Hollow Section

Round profile (d)

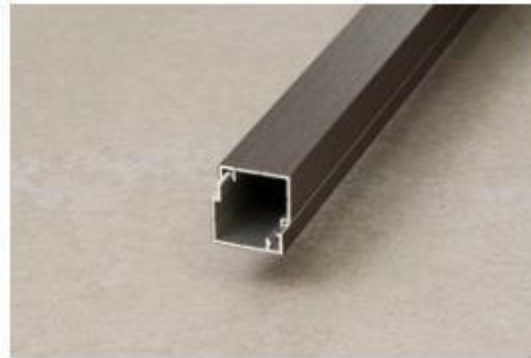
22mm	60mm
30mm	80mm
40mm	90mm



Ever Art Wood® End Caps

Several end cap finishes are available to suit our extensive range of Ever Art Wood® batten profiles.

The Mizotsukibaten incorporates a full length channel along the backside to which a bolt is fed through and a fixed to an 'L' bracket. The 'L' bracket can be fixed directly to a structure or posts.



Kabebari Cladding - Square

Two Section Concealed Fix
 20 x 20mm
 30 x 30mm
 50 x 50mm



Kabebari Cladding - Kogarana

Two Section Concealed Fix
 24 x 27mm



Kabebari Cladding - Rectangle

Two Section Concealed Fix
 30 x 50mm
 30 x 85mm
 50 x 100mm



Kabebari Cladding - Oki

Two Section Concealed Fix
 100 x 100mm




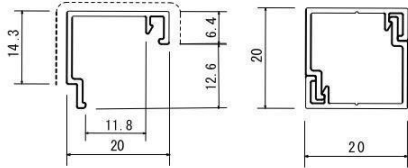
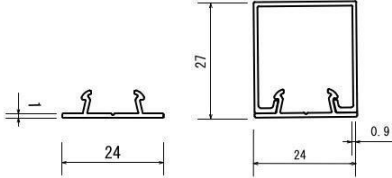
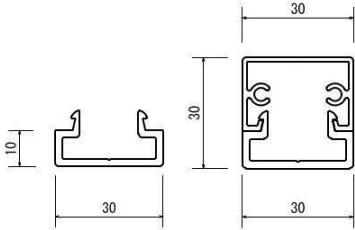
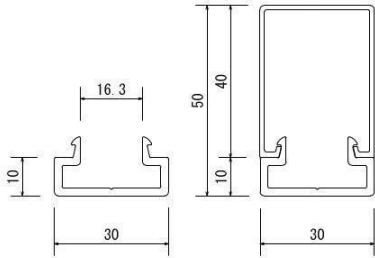
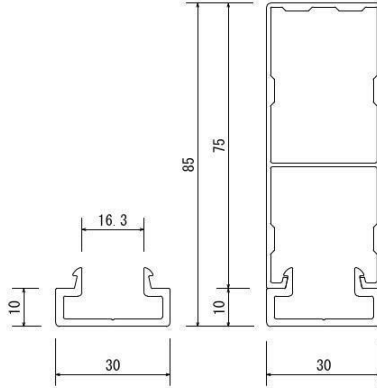
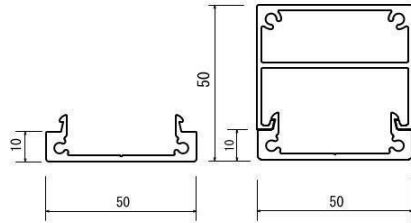





Kabebari Cladding - Slimline

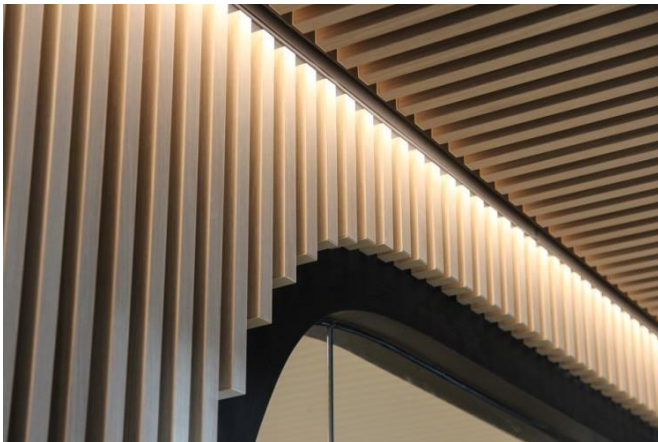
Two Section Concealed Fix
 Low profile batten
 30 x 13mm
 30 x 18mm
 40 x 20mm



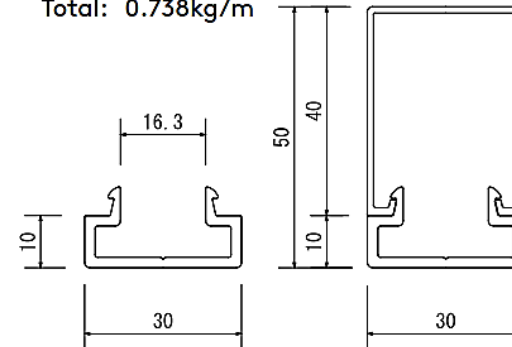
Kabebari Cladding - Plank

Two Section Concealed Fix
 Plain plank profile
 100 x 12mm

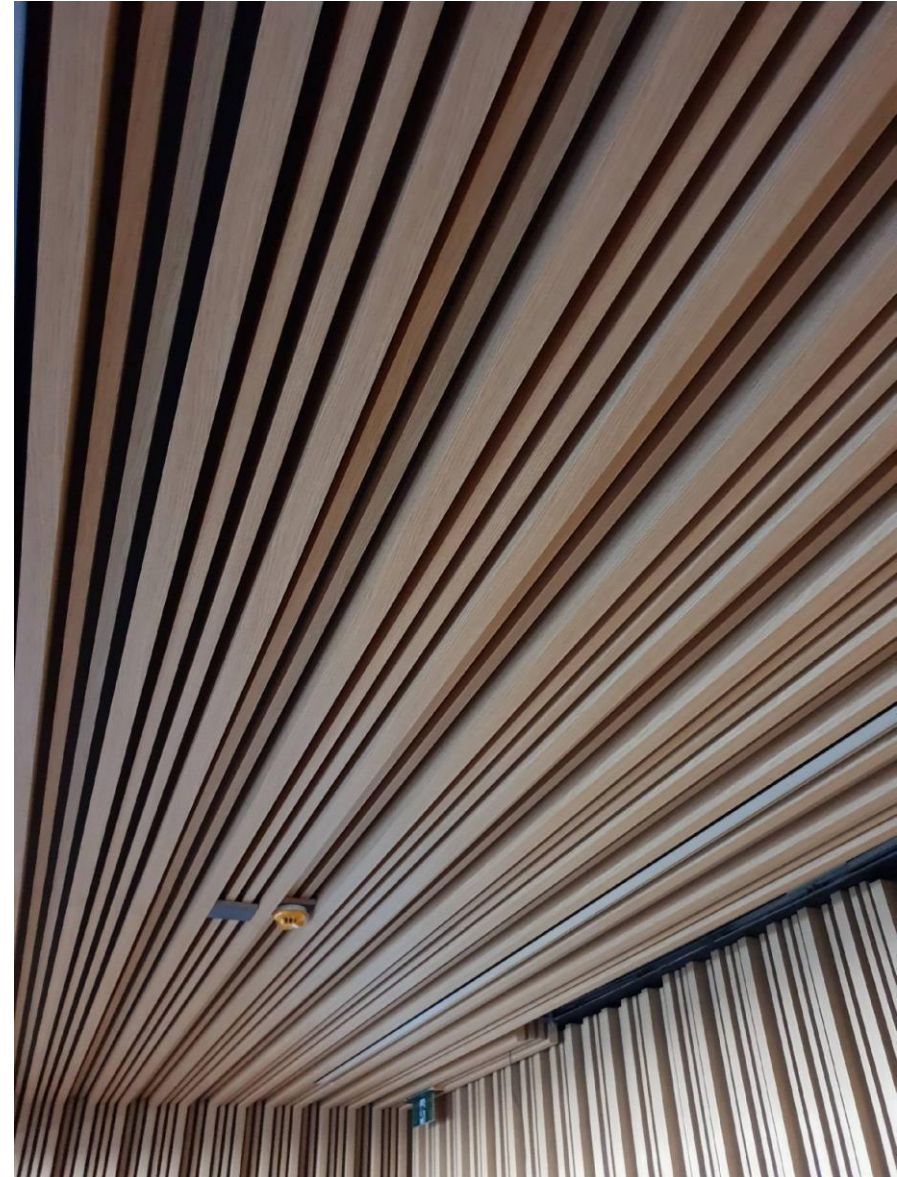
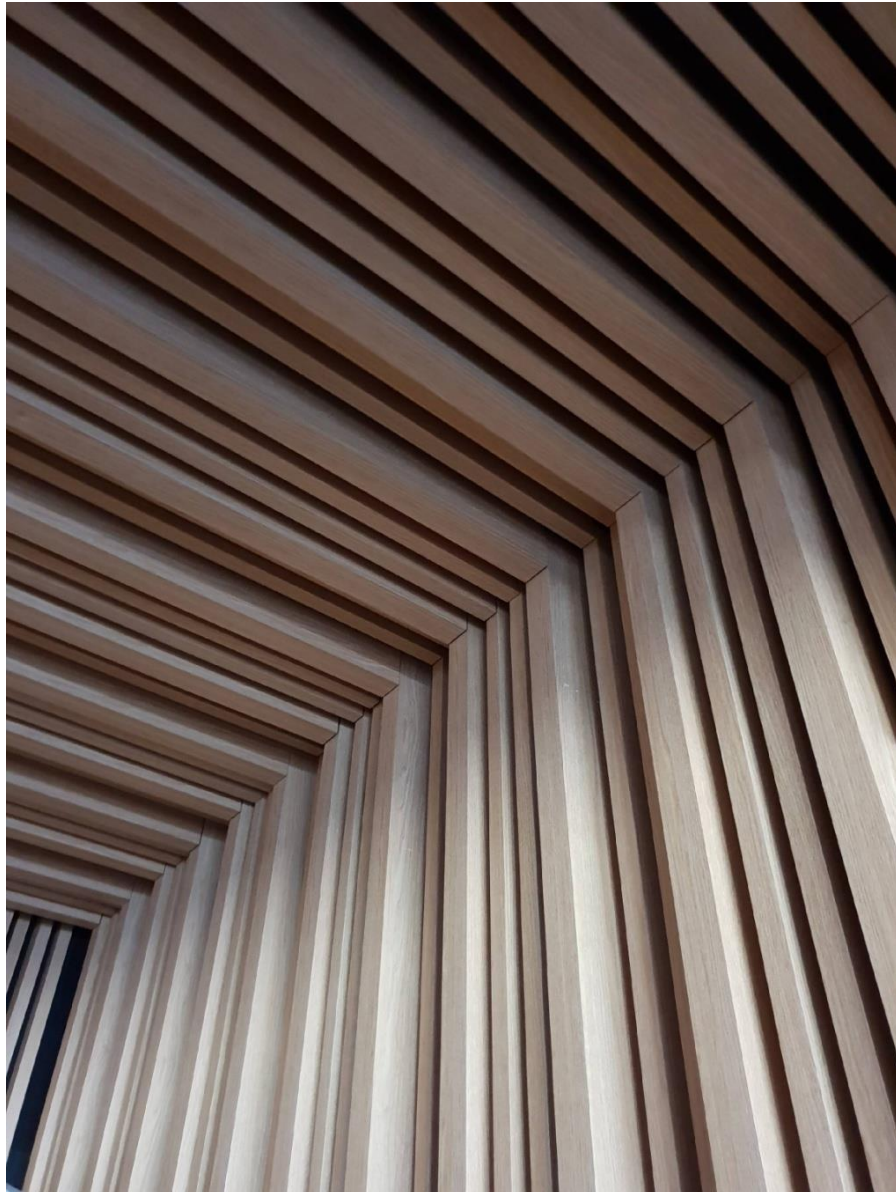
Drawing Number											
	Kabebari batten detail										
	Profile: 20x20mm Base: 0.066kg/m Cover: 0.066kg/m Total: 0.132kg/m		Profile: 24x27mm Base: 0.099kg/m Cover: 0.224kg/m Total: 0.323kg/m		Profile: 30x30mm Base: 0.348kg/m Cover: 0.347kg/m Total: 0.695kg/m						
											
Profile: 30x50mm Base: 0.348kg/m Cover: 0.390kg/m Total: 0.738kg/m		Profile: 30x85mm Base: 0.348kg/m Cover: 0.712kg/m Total: 1.060kg/m		Profile: 50x50mm Base: 0.547kg/m Cover: 0.853kg/m Total: 1.400kg/m							
											
				Product name:		Project name		Creation date	Number	scale	projection
				Ever Art Wood - Kabebari				2018/05/01	2/5	not to scale	
				Approval	Chek	Drawing	Design	Customer		Distributor	
No.	DATE	Charge			Hotta	Hotta		covet			



Size: 30x50mm
Base: 0.348kg/m
Cover: 0.390kg/m
Total: 0.738kg/m



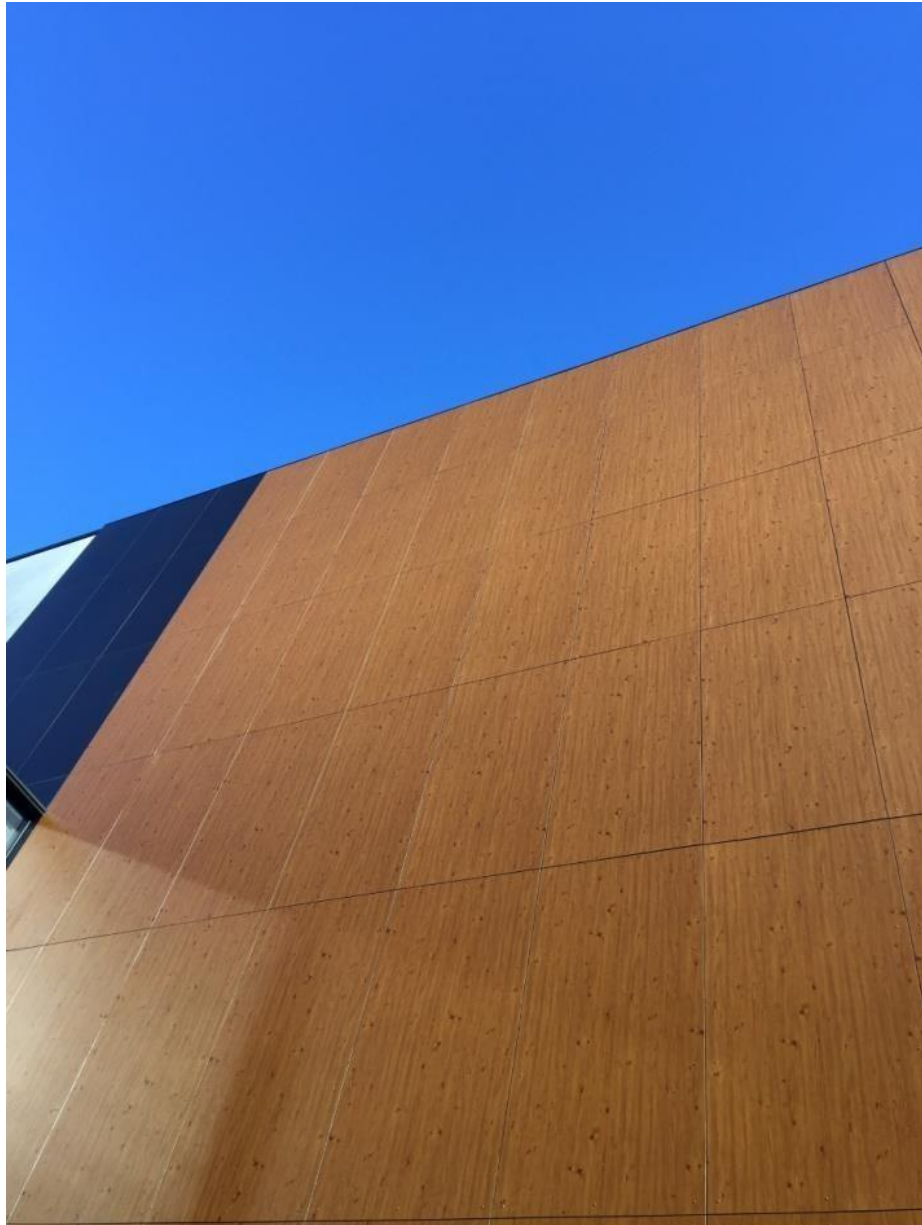


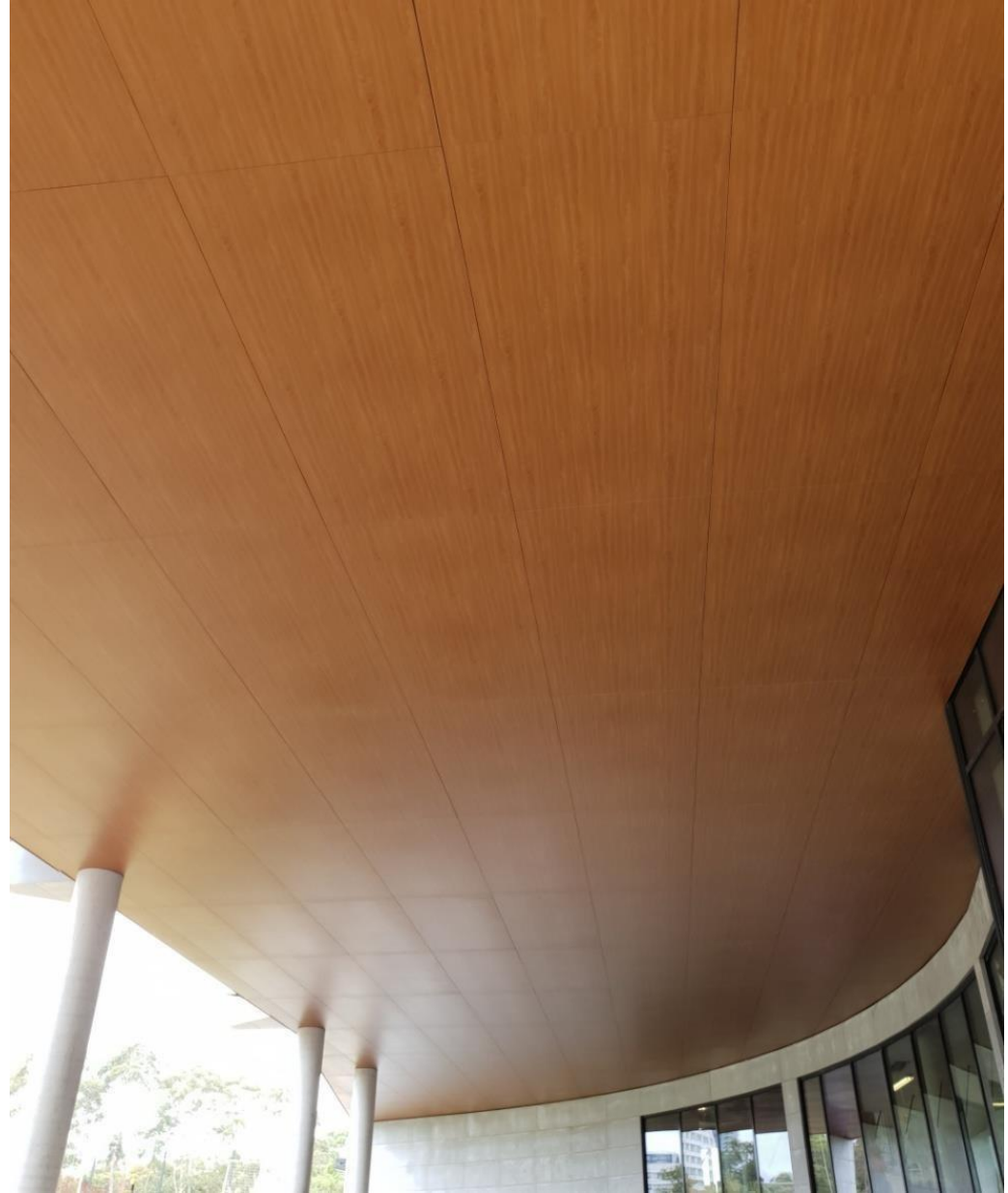








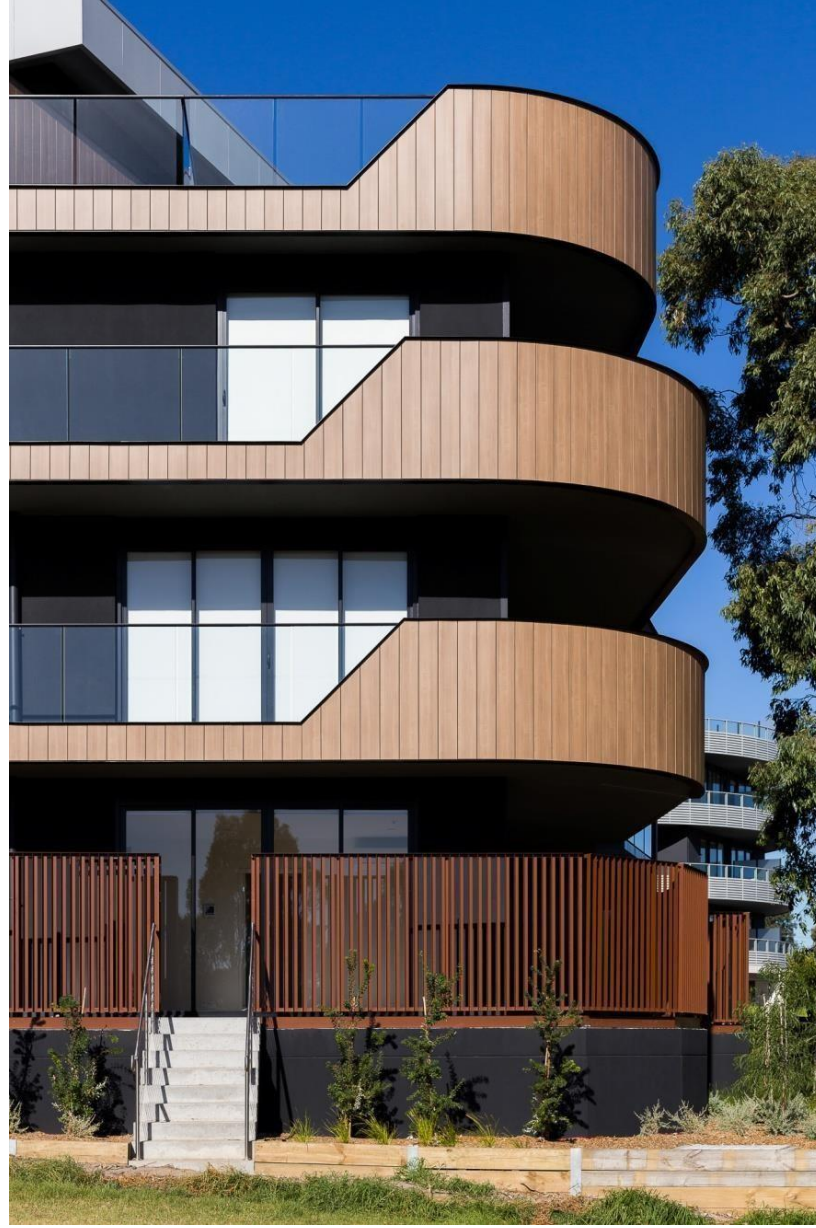
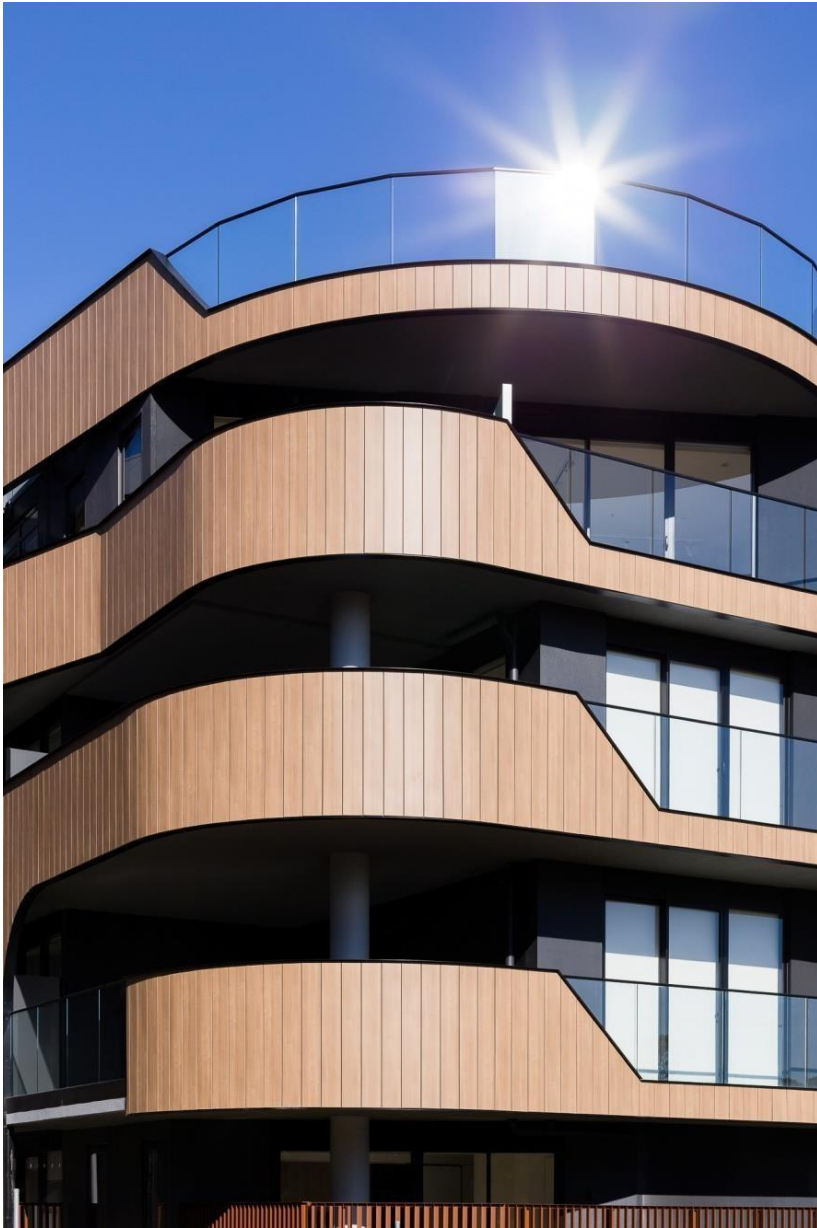






- 200-300mm plank face
- 5-20mm joint









Website:

www.nsrnirvana.com

Email:

info@nsrnirvana.com

Phone: [+91-9966966 767](tel:+91-9966966767)

